



01



02

01 First, cut the 10-pound foam (Polyurethane) and align the transparent acrylic plate to the centerline.

02 Before any process, get ready for all the parts.



03



04

03 Polish the disk panel, where light will be shined through.

04 In order to make an Acrylic Standoff, send, polish, and drill it on the lathe.



05



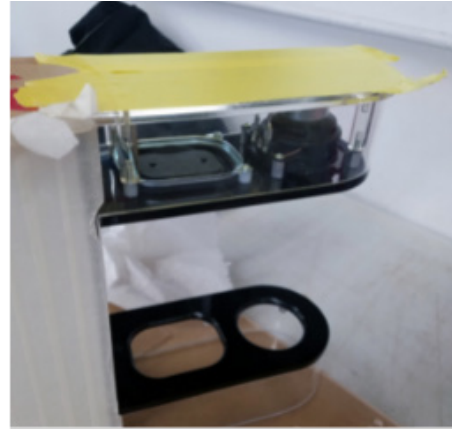
06

05 Drill a screw hole in the panel where the button can insert the control.

06 Mount all of the body pieces.



07

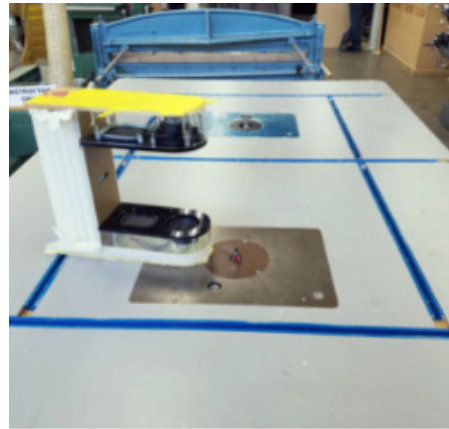


08

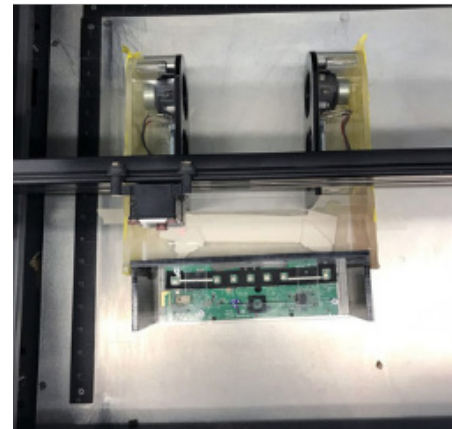
07 Fix the acrylic plate on which the cone can climb to the body part with screws.

08 Tape the edge of acrylic on the speaker to prevent scratches.

---



09

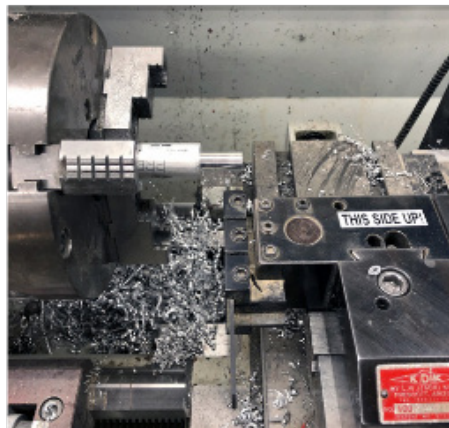


10

09 After taping on the acrylic, route it to match the acrylic to the body.

10 Laser-cut a button-shaped hole in the acrylic side where the control will be located.

---



11



12

11 Cut the coin-shaped metal button with metal loading.

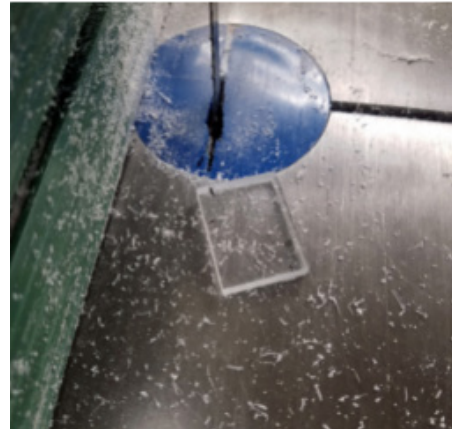
12 Attach the screw behind the metal button.

---





13



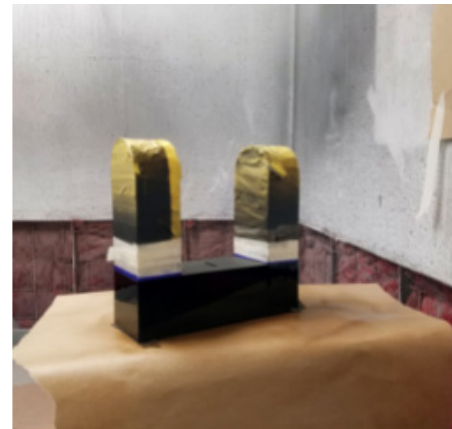
14

13 Assemble all parts of the body. And solder the speaker parts.

14 Cut the acrylic to match the 90-degree angle and ensure all the speaker walls are at a 90-degree angle.



15



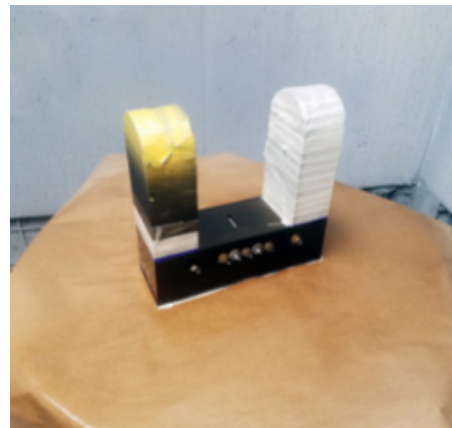
16

15 Cover with tape except for the part to be painted.

16 Apply 3 coats of black car paint using an air gun.



17



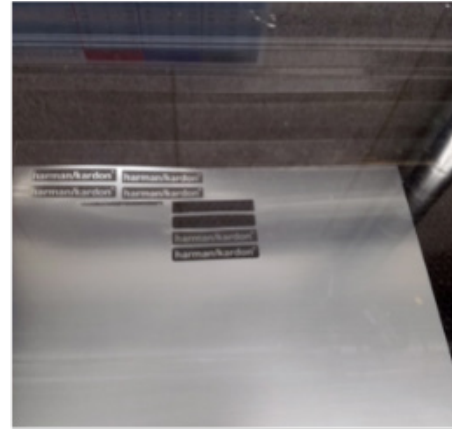
18

17 Apply decal for the name and information of the product.

18 Apply clear coat



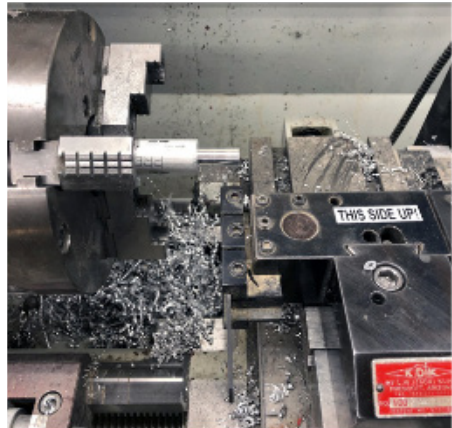
19



20



21



22

- 19 It must be dried for at least 6 hours on a warm heater for the paint and clear coat to dry completely.
- 20 Create a logo emblem using a laser cut acrylic plate with a metal cover
- 21 In order to make an Acrylic Standoff, send, polish, and drill it on the lathe.
- 22 Polish the disk panel, where light will be shined through.