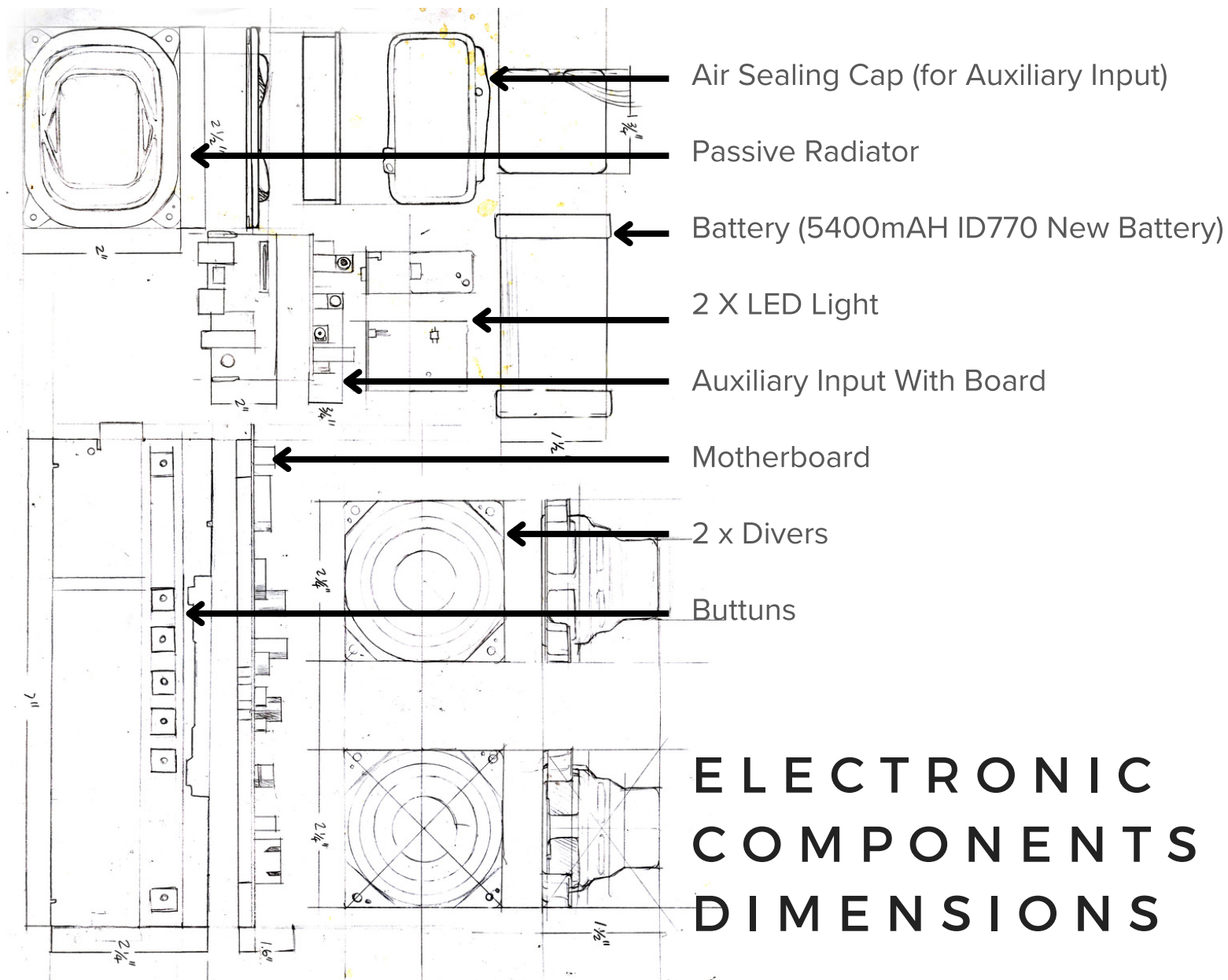


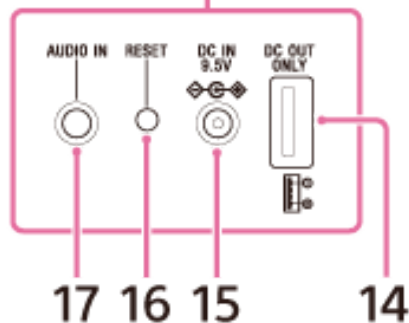
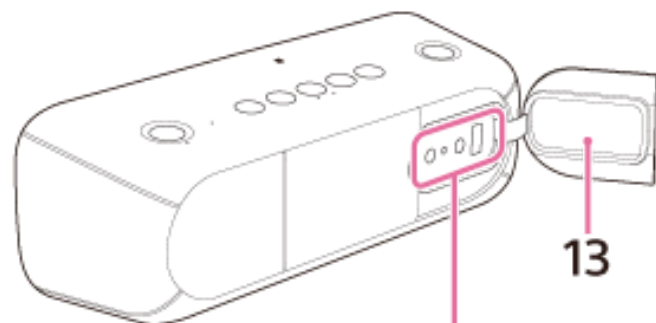
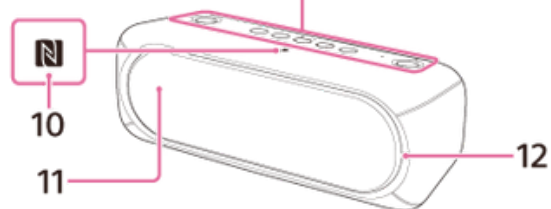
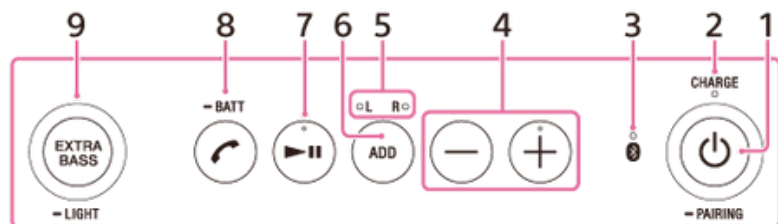



PARTS THAT HAVE BEEN DISASSEMBLED

1. Main Front Frame (Body)
2. Main Frame (Body)
3. Top Outer Casing (Body)
4. 2 x Side outer casing (Body)
5. Bottom outer casing (Body)
6. Front Metal Casing (Body)
7. White Protective Case
8. 2 X LED Light
9. 2 X Fiber tube
10. Air sealing cap (for Auxiliary Input)
11. Battery (5400mAH ID770 New Battery)
12. Passive Radiator
13. 2 x Drivers
14. Motherboard
15. Auxiliary Input with Board



ELECTRONIC COMPONENTS AND DIMENSIONS



1. (POWER) PAIRING BUTTON/INDICATOR
2. CHARGE INDICATOR
3. (BLUETOOTH) INDICATOR
4. -/+ (VOLUME) BUTTONS
5. L (LEFT)/R (RIGHT) INDICATORS
6. ADD BUTTON
7. (PLAY) BUTTON
8. (CALL) BATT (BATTERY) BUTTON
9. EXTRA BASS LIGHT BUTTON/INDICATOR
10. THE LIGHTING BUILT IN THE SPEAKER IS TURNED ON/OFF WHEN YOU PRESS AND HOLD THIS BUTTON FOR ABOUT 3 SECONDS.
11. N-MARK
12. MICROPHONE
13. LIGHTING
14. CAP
15. DC OUT ONLY PORT (USB)
16. DC IN 9.5V JACK
17. RESET BUTTON
18. AUDIO IN JACK

HOW TO DISASSEMBLE

how to disassemble body . 1



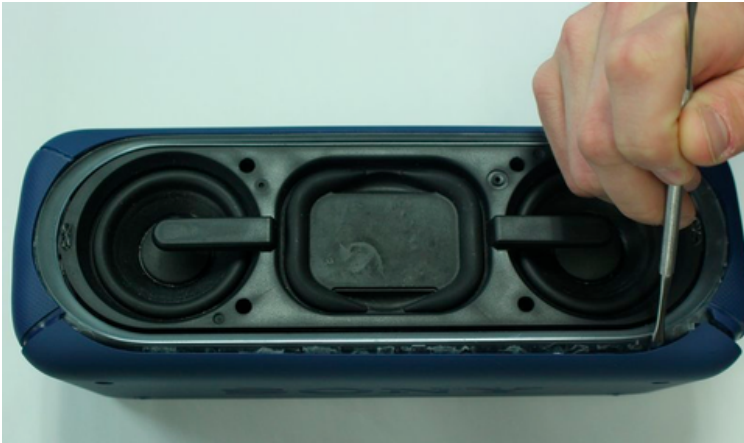
Remove the speaker case from the outer casing by prying it from the base of the speaker using a metal spudger.



Remove the four T-8 screws (15 mm long) from the black speaker face.

how to disassemble body . 2

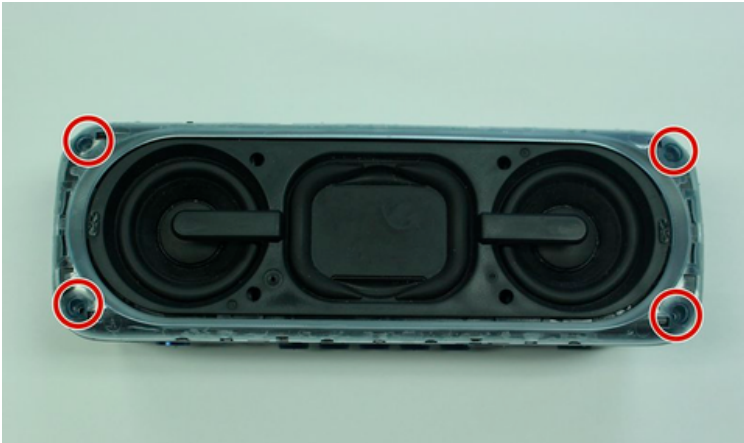
Pry the two rubber end pieces loose enough to pry off two pieces of the long plastic casing from the speaker body using a metal spudger.



Pry the two remaining rubber pieces of the casing completely away from the body of the speaker with the same metal pry tool.



how to disassemble body . 3



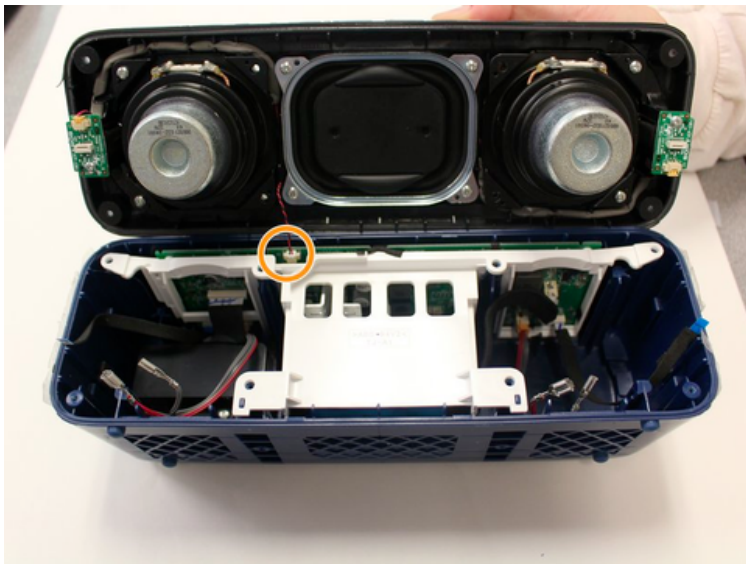
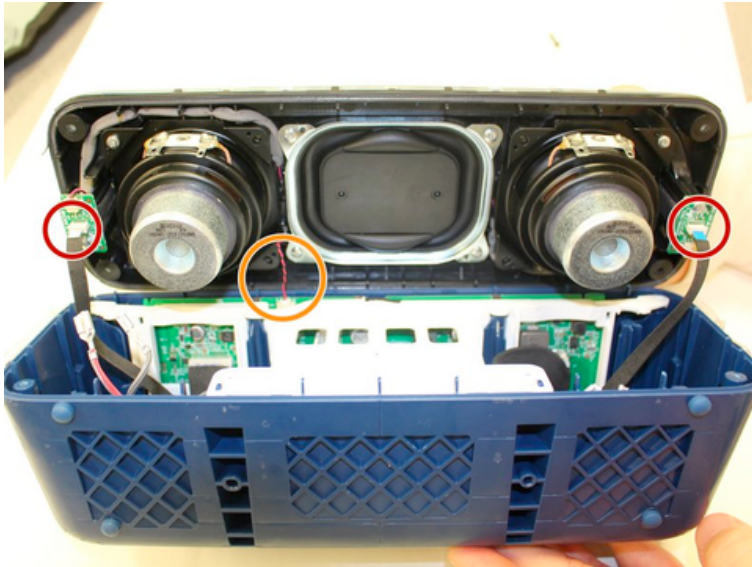
Once you have removed the outer blue casing, four T-8 screws (15 mm long) will be revealed on each corner. After removing these screws, simply pull the top part of the speaker way from the body to get the the inner part of the speaker.



Once you have gotten to the internal parts of the speaker, there are seven wires connecting the speaker plate to the body of the speaker. Pinch the release tabs at the top of each of the four main wires to remove them.

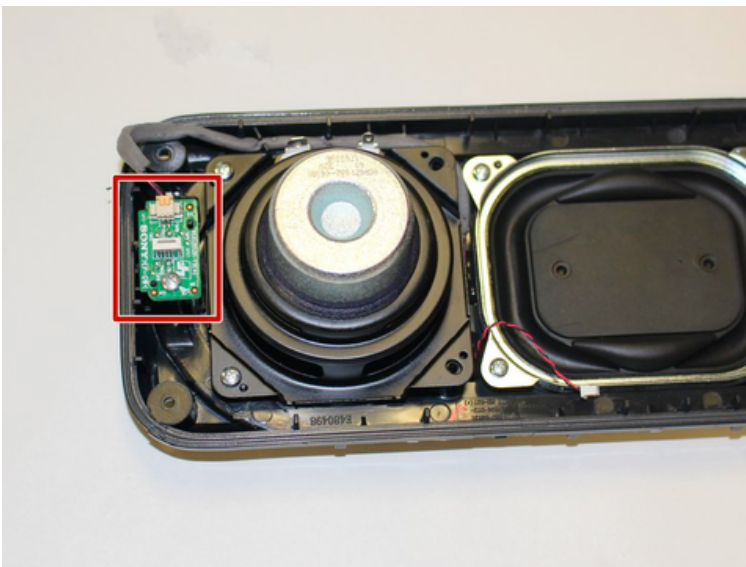
how to disassemble body . 4

- Simply pull the thin wires on each side to remove them from their attachment points.
- Remove the final red and black wire by gently pulling it apart.
- This will ultimately detach the speaker plate from the base.



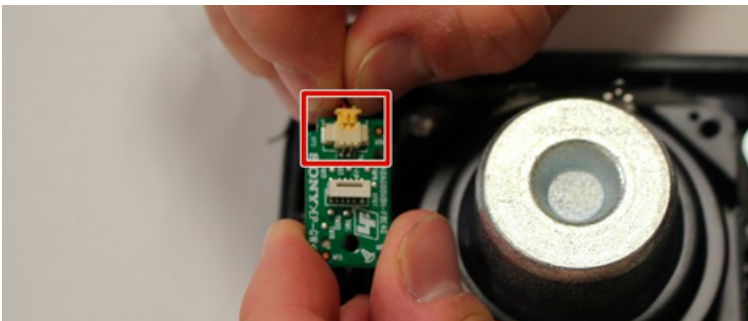
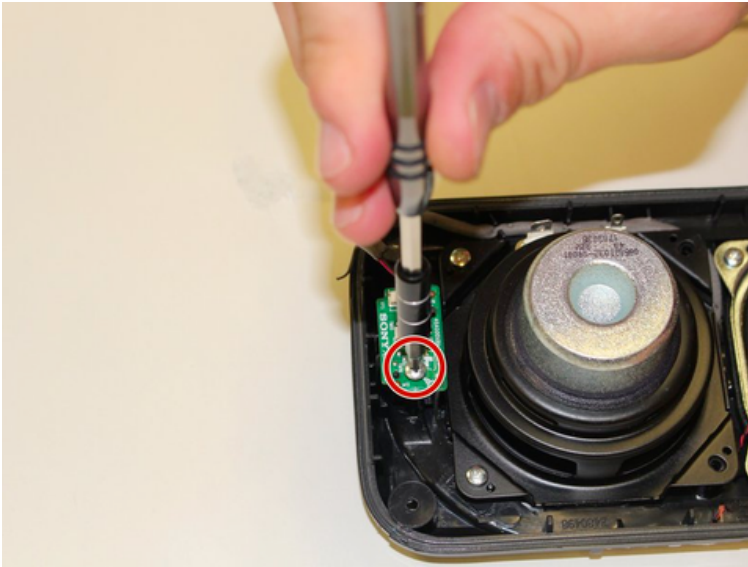
how to disassemble LED Control Panel . 5

After you take the speaker plate off the body of the speaker, locate the LED control panels on each end of the speaker plate.



how to disassemble LED Control Panel . 6

- Unscrew the 10mm PH1 screw from each control panel.
- The green panel should now be loose and connected only by the red and black plug in.

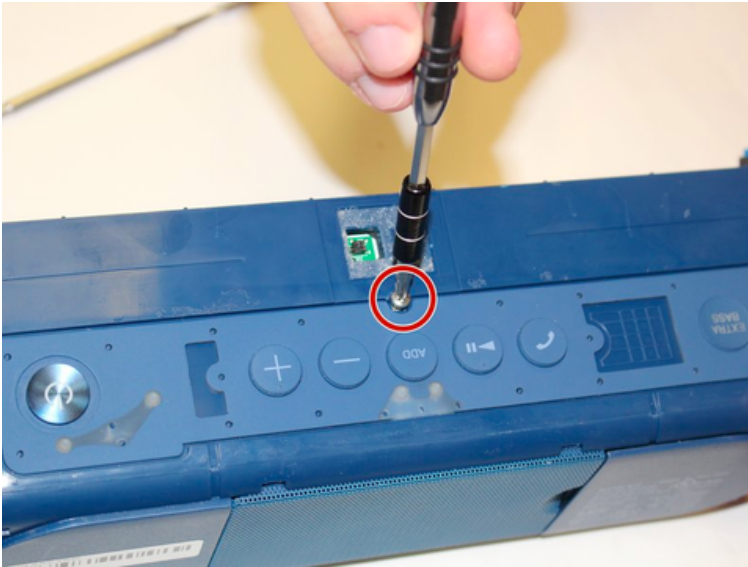


Carefully unplug the wire from the panel, releasing the panel from the speaker plate.

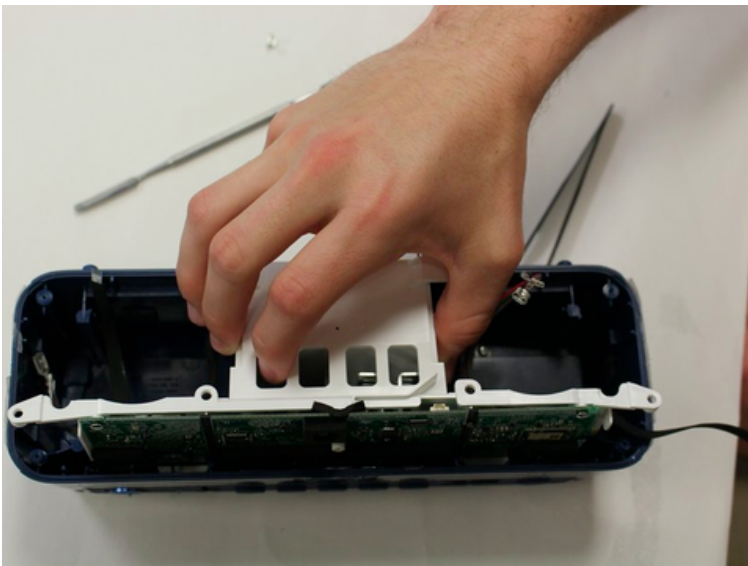
Your LED light control panel is now disassembled and ready to replace.

how to disassemble Motherboard . 7

Unscrew the PH1 screw at the top of the speaker.

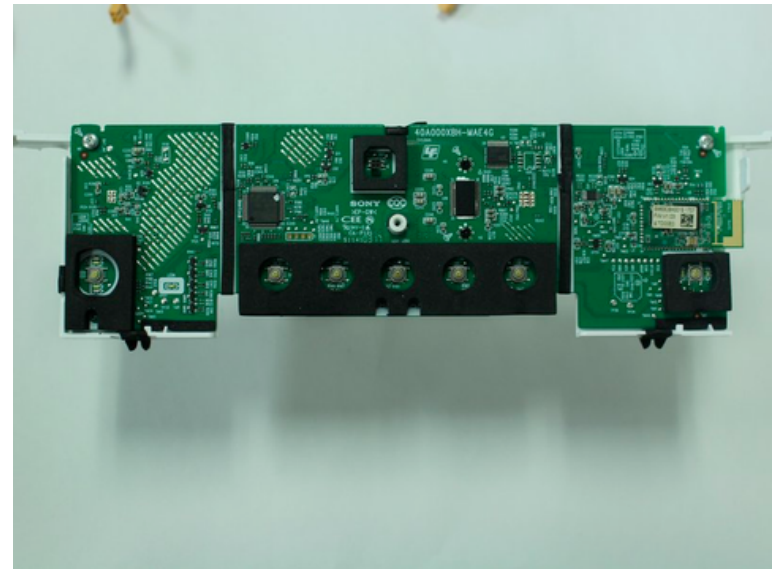
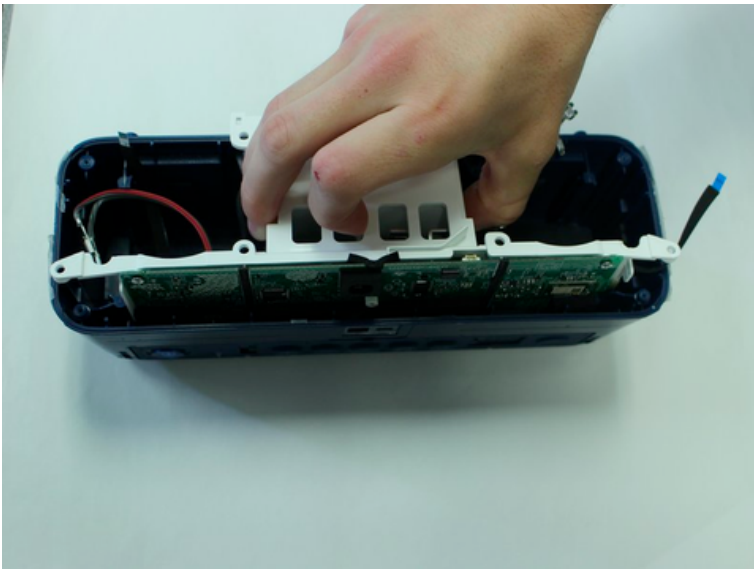
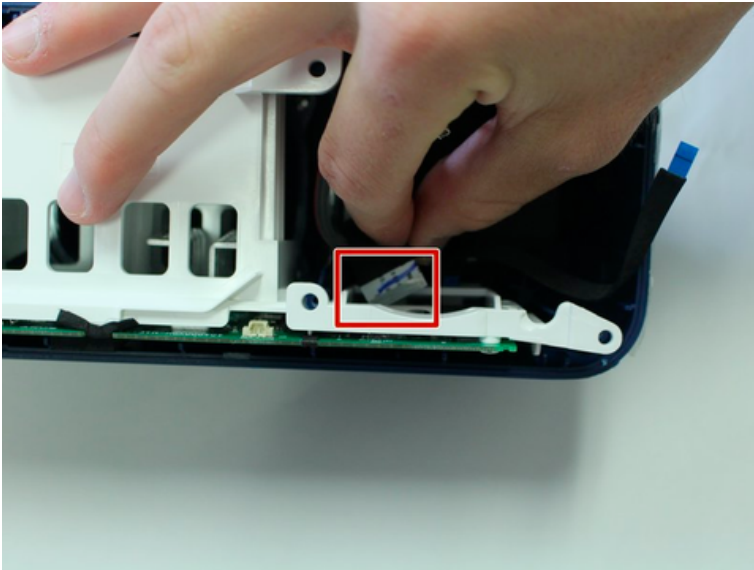


Slide the white protective case out of the speaker.



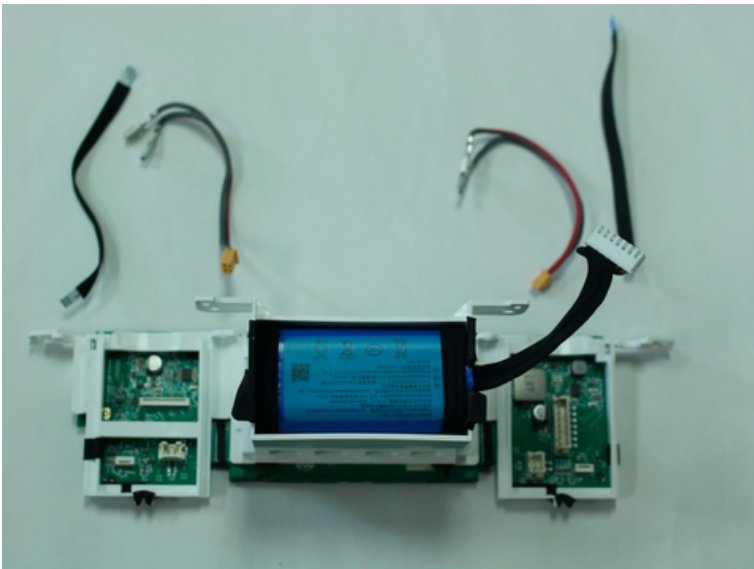
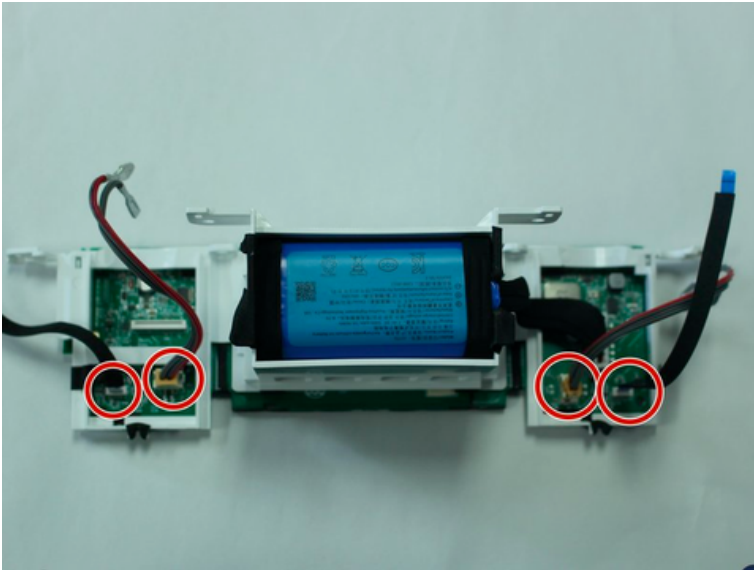
how to disassemble Motherboard . 8

- Disconnect the wire from the motherboard.
- Then remove the motherboard and white case from the speaker.



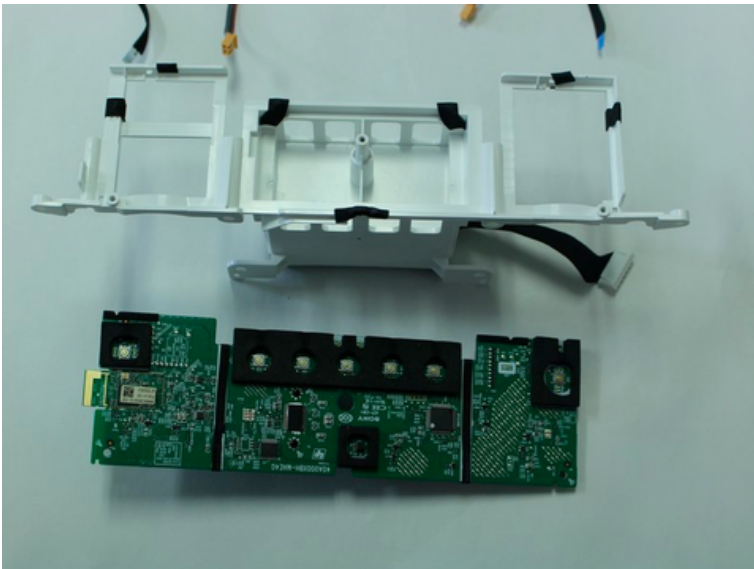
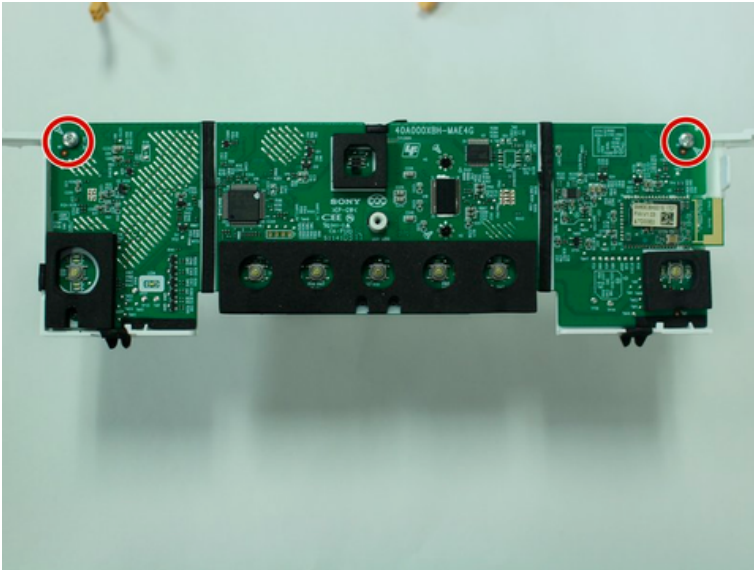
how to disassemble Motherboard . 9

Remove the wires connected to the back of the motherboard before removing the white cover.



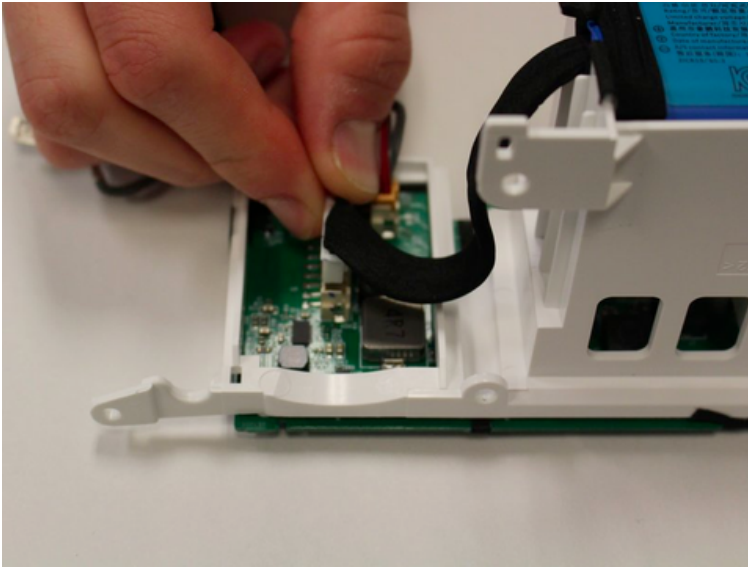
how to disassemble Motherboard . 10

Remove the PH-1 screws (10 mm) from the motherboard to detach it from the outer white casing.



how to disassemble Battery. 11

Unplug the wire that connects the battery to the motherboard.

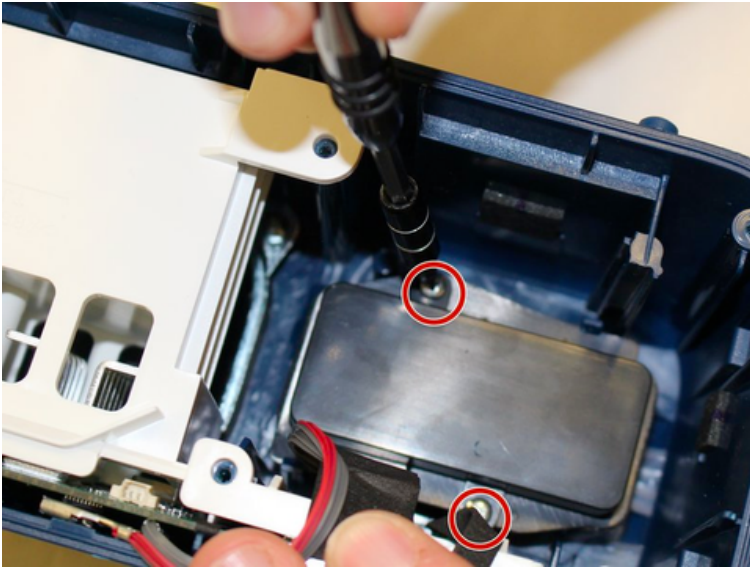


To remove the battery, peel away the tape that holds the battery in place.



how to disassemble Auxiliary Input . 13

Unscrew the PH 1 (10 mm) screws from the black outer casing of the auxiliary port.



After removing the screws, pry the black cover from the base of the speaker on both sides using a metal spudger.



how to disassemble Auxiliary Input . 14

Once the black casing has been removed, you can pull the auxiliary port out of the inside of the speaker.

